

S.6 Berg Liquor System Interface

The Berg device sends a PLU number to the M\$ liquor server. M\$ looks up the PLU number and determines if that number is assigned to any menu item. If the PLU is a valid number, M\$ will release the pour and record the PLU.

There are 3 types of records. Open Pour (liquor has been poured with out a sale), *Open Sale* (liquor that was sold through the register system but not poured), and *Closed Sale* (Open pours matched with open sales).

If a drink is poured and that drink's record is never marked closed, it will then become an exception. All exceptions from that bartender will be printed at the end of their shift. It will show the number of exceptions, the time, and the register name. Once the bartender's audit is closed, those open pours will be marked as exceptions and will no longer be updated by sales from the register system. All exceptions for the day will be printed on the nightly sales report.

Berg Liquor System Setup:

Requires a separate license from Micro\$ale.

How to Setup Berg:

You need the list of assigned PLU numbers from the Berg Liquor System. Think of PLU numbers as pricing levels. These numbers will be used to build PLU recipes in M\$.

Menu Item Name	Jack Daniels
Category	Mixed Drinks
Department	Liquor
Regular Price	4.95
Number Available	9999
Sales Tax Table	1
Special Tax Table	0
Liquor Tax Amount	0.00

PLU	Quantity
100	1

To build the Liquor PLU's, go to Menu Maintenance and then Menu items and pricing.

Select or create a menu item, and press the *Build Liquor PLU's* button. The liquor system PLU list will be displayed. This is a recipe list and can hold more than one PLU, allowing you to have more than one liquor assigned to a drink.

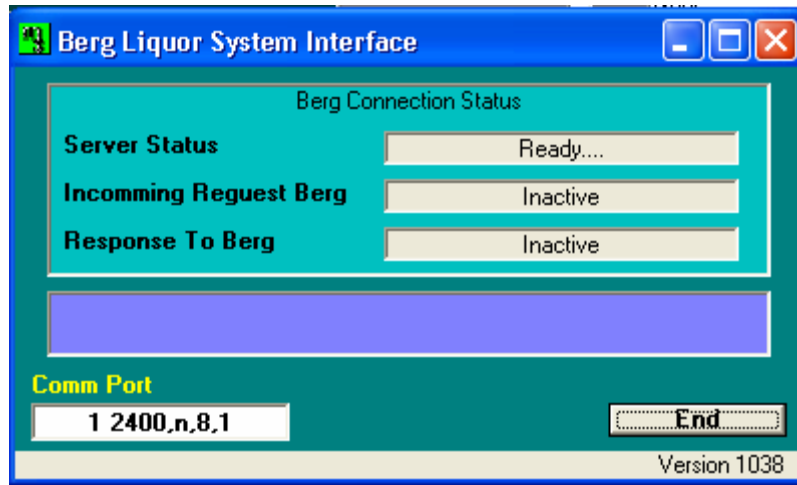
1. Enter the PLU number from the Berg Liquor System (provided by Berg).
2. Enter the quantity of pours required to make this drink. (This quantity must be a whole number)

Example: For the Jack Daniels menu item, a 100 was entered under PLU number. (The Berg system is using 100 for a premium drink). The quantity is number of pours required to make this drink. 1 pour from a premium PLU number is required to make a Jack Daniels Drink.

Drinks can me made with a variety of different liquor amounts. Keep in mind that the PLU is what designates how much liquor is to be poured not the quantity field; the quantity field determines the number of pours required to make the drink.

REMEMBER NOT TO USE FRACTIONS IN THE QUANTITY FIELD!!

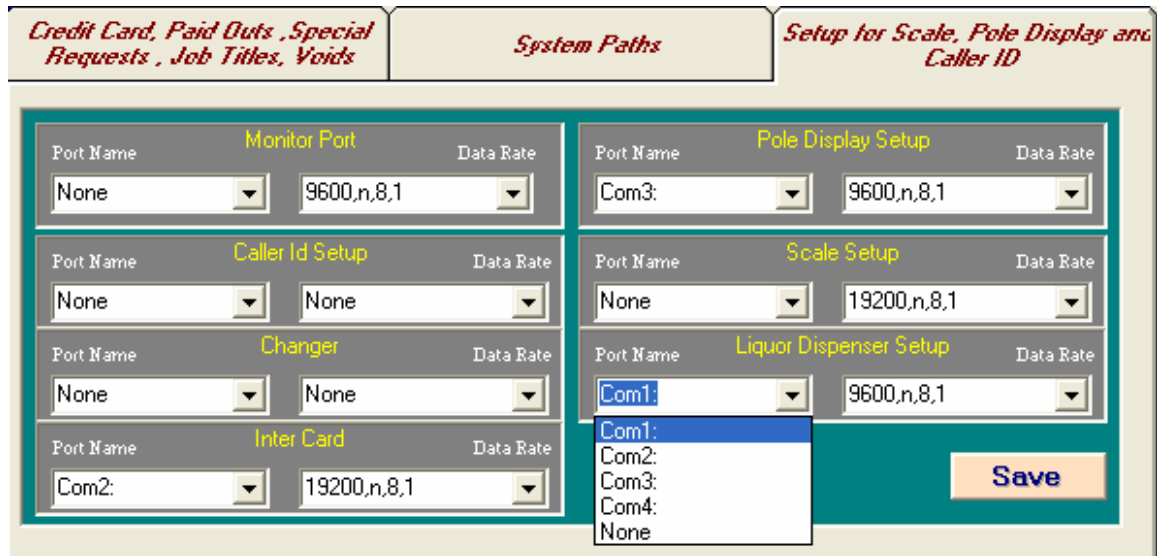
Configuring the Pouring Server:



This part of the software handles all communications between the pouring system and the register system. The server status box indicates the condition of the connection between the Berg Device and the computer. Com Port let us know what com port and at what speed we are communicating at. Each terminal with a Berg system attached will need a pouring server.

To set the port and baud rates:

1. Go to the Managers menu
2. Go Register Setup
3. Go to Register Configuration
4. Select the tab label, *Setup for Scale, Pole Display and Caller Id*



Select port name from the section labeled liquor dispenser Setup, this is the com port that the Berg pouring device is attached to. Select the baud rate that the computer and device will communicate at (see Berg manual for baud rate and cable configuration). Press *Save*

How to activate pouring server:

Quick Service Options	License / Defaults / Meal Periods	Printing / Cash Drawer Options																										
Licensed Options <ul style="list-style-type: none"><input type="checkbox"/> Enable Diner Frequency<input type="checkbox"/> Turn On Finger Print Device (Lic Req.)<input type="checkbox"/> Finger Print Required To Open Check<input type="checkbox"/> Use Dining Room Screen (Lic Req.)<input type="checkbox"/> Bussers Releases Table<input type="checkbox"/> Enable Scheduler<input checked="" type="checkbox"/> Liquor Dispensing Server	Default Settings <table border="1"><tr><td>Quick Service Counter</td><td>Quick Serv. Bk Office</td></tr><tr><td>Quick Service Drive Thru</td><td></td></tr><tr><td>Full Service Wait Station</td><td>Full Service Back Office</td></tr><tr><td>Full Service Bar Station</td><td></td></tr></table>	Quick Service Counter	Quick Serv. Bk Office	Quick Service Drive Thru		Full Service Wait Station	Full Service Back Office	Full Service Bar Station		Meal Period Options <table border="1"><thead><tr><th>Meal Period</th><th>Begin</th><th>Ending</th></tr></thead><tbody><tr><td>Breakfast</td><td>6.00</td><td>10.00</td></tr><tr><td>Lunch</td><td>11.00</td><td>14.00</td></tr><tr><td>Thru</td><td>15.00</td><td>17.00</td></tr><tr><td>Dinner</td><td>18.00</td><td>20.00</td></tr><tr><td>Late</td><td>21.00</td><td>2.00</td></tr></tbody></table>	Meal Period	Begin	Ending	Breakfast	6.00	10.00	Lunch	11.00	14.00	Thru	15.00	17.00	Dinner	18.00	20.00	Late	21.00	2.00
Quick Service Counter	Quick Serv. Bk Office																											
Quick Service Drive Thru																												
Full Service Wait Station	Full Service Back Office																											
Full Service Bar Station																												
Meal Period	Begin	Ending																										
Breakfast	6.00	10.00																										
Lunch	11.00	14.00																										
Thru	15.00	17.00																										
Dinner	18.00	20.00																										
Late	21.00	2.00																										

To turn on the Berg system interface:

1. Go to the Managers Menu
2. Go to Register Setup
3. Go to Register Options
4. Select the tab, *License / Defaults / Meal Periods*
5. Under licensed Options check the box *Liquor Dispensing Server*
6. Press *Save*

It will be necessary to restart MicroSale after this option is checked. Each time MicroSale starts, the pouring server will be started automatically.