

S.4 Kitchen Video Setup

Micro\$ale is integrated with Micro Plus kitchen video system. Kitchen video can be setup as a *Line by Line* or *Not Line by Line*. Menu items can be routed to kitchen displays the moment the menu item is pressed or it can be setup to display the entire order once total is pressed.

Line By Line:

Requires one serial cable attached to a P.O.S terminal and com1.

On the kitchen video computer, up to 6 displays can be driven from this one cable.

When a menu item is pressed, it will be displayed on the monitor. If this item is deleted, or modified it will be removed from the display. Each order will be displayed together in one box of the display.

Not Line by Line:

Requires a cable for every monitor. This configuration is similar to a kitchen printer setup. Each monitor will be setup in windows, (see setup), and routed the same as a kitchen printer. Menu items are not sent to the display until the order is totaled and cannot be changed once it has been sent.

Register Name Setup:

Local Register Setup *System Information / Speed Tenders* *Menu Access Setup*

Register Name: REG_1

Data Path: C:\Program Files\DevStudio\VB\Cashre

Server Path: C:\Program Files\DevStudio\VB\Cashre

Common Path: C:\Program Files\DevStudio\VB\Cashre

Back Up Path: C:\Program Files\DevStudio\VB\Cashre

Number of Users: 1

Quick Service System (DO NOT Check If Full Service)

List of Registers

Find Registers

Clear Name

Test Paths Use Default Name Save

Naming registers:

Each register must be named with REG_ followed by the register number (see Register Name from caption above). This is the only way for the video system to know which register the order is coming from. Kitchen displays will show the register number at the top of the order box. Make sure you press **Save** when through.

Assigning a COM port:

The COM port is assigned only on the video server. The video server is the machine where the cable connects from the P.O.S. Terminal to the video computer.

Credit Card, Paid Outs, Special Requests, Job Titles, Voids *System Paths* *Setup for Scale, Pole Display and Caller ID*

Port Name: None Data Rate: 9600,n,8,1 **Monitor Port**

Port Name: Com3 Data Rate: 9600,n,8,1 **Pole Display Setup**

Port Name: None Data Rate: None **Changer**

Port Name: Com2 Data Rate: 19200,n,8,1 **Inter Card**

Port Name: None Data Rate: 19200,n,8,1 **Scale Setup**

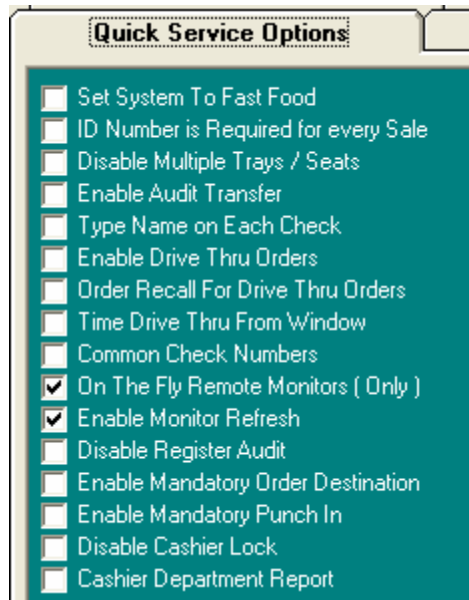
Port Name: Com1 Data Rate: 2400,n,8,1 **Liquor Dispenser Setup**

Save

To assign the port, click on the list box from port name under Monitor Port. Select the com port where the video server cable is connected. The data rate should be 9600,n,8,1.

Make sure you *Save* the settings when done.

Activate Video System:



Click on the 2 options listed above *On the Fly Remote Monitors (Only)* and *Enable Monitor Refresh*. This must be selected on each register where the kitchen video is desired.

Make sure you *Save* the settings.

*Please Note: If On The Fly Remote Monitors (Only) is **NOT** checked you **WILL NOT** be able to access the button labeled Kitchen Video Setup.*

The next Item in the setup process is *Video Server Setup*

The screenshot shows a software configuration window with three tabs: "General Options (1)", "General Options (2)", and "Full Service Options".

- General Options (1) - General:** A list of checkboxes including "Display Amount Tendered" (checked), "Display Check Total on Order Screen" (checked), "Menu Items Display 24 Buttons", "Disable Qty Key", "Use Blind Audits For Cashiers", "Use Quick Menu On This Terminal", "Misc Sale Not Allowed", "Menu Items Grouped Together", "Menu Items In Order as Entered", "Disable Order History", "Turn On Time Event Prefix", "Scan Item Required Quantity", and "Allow Configuration By Job Title".
- General Options (1) - Sales Tax:** A list of checkboxes including "Multi Sales Tax Rates Are In Use", "Multi Special Tax Rates In Use", and "Allow Non Taxed Misc Sale".
- General Options (1) - Kitchen Video Setup:** A sub-window with "Server Name" (REG_1) and "Port Address" (1001). It includes "Save" and "Exit" buttons.
- General Options (1) - Modifiers:** A section for "1 St. Mod Prefix" (No), "2 nd Mod Prefix" (LT), and "3 rd Mod Prefix" (Xtra). It also includes checkboxes for "Disable Modifier Prefix Buttons", "Use 1/2 on Modifiers", "Use 1/4 on Modifiers", and "Select Modifiers by 1/4 Placement".
- Full Service Options - Special Options:** A list of checkboxes including "Credit Card Server", "Enable Credit Card Group", "Set to Back Office", "Enable 24 Hour Operations", "Member Name Required", "Enable Department Discounts", "Enable Exchange Rate", "Create Export Files", "Start Remote Video Server" (checked), and "File Transfer Server".
- Full Service Options - Other:** A "Configure By Job Title" dropdown set to "None", a "Delete Job Title" button, and buttons for "Standard Hourly Sales", "Hourly Sale Configuration", "Create Label File", and "Kitchen Video Setup".

Video Server Setup:

To configure the server, press the button labeled *Kitchen Video Setup*. This will display a box labeled *Kitchen Video Setup* (See example above). There is no need to change the port address. *Port address* is the port which data is passed between the register and the video server. *Server Name*: enter the name of the register where the video server is connected. You must use the network computer name of the video server (see next page example to get to network computer name).

Note: each register will require it own setup

Video Server:

The machine connected to the video system will need to have *Start Remote Video Server* checked. (See example above in the yellow box)
Only the video server should have this box checked.

To find the network computer name, click *start* on the task bar.

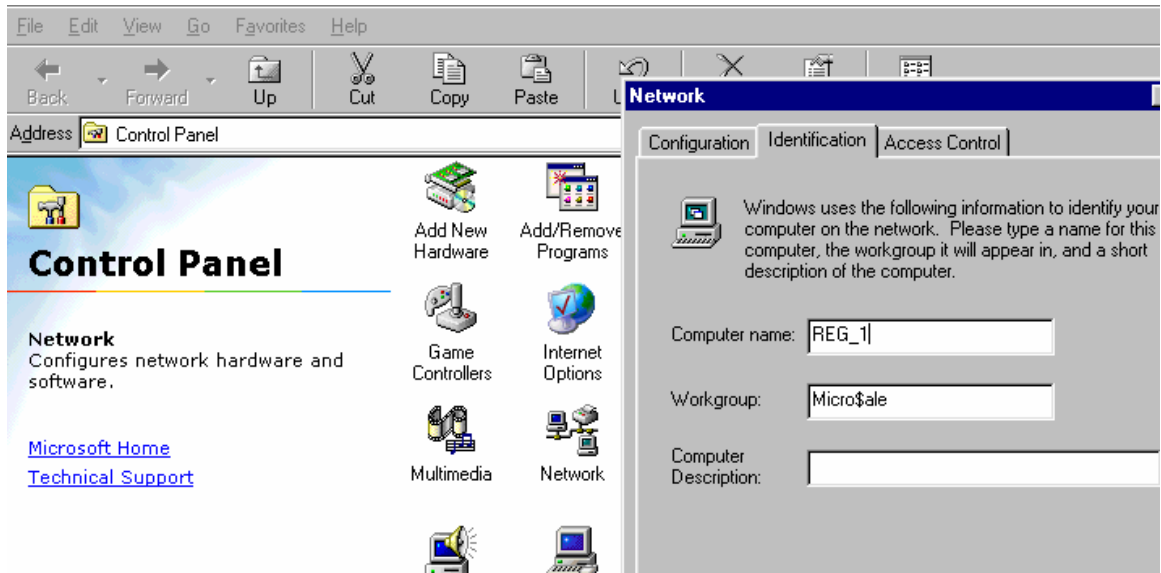
Click *Settings*.

Click *control panel*.

Double click the icon labeled *Network*.

Select the tab, *Identification*

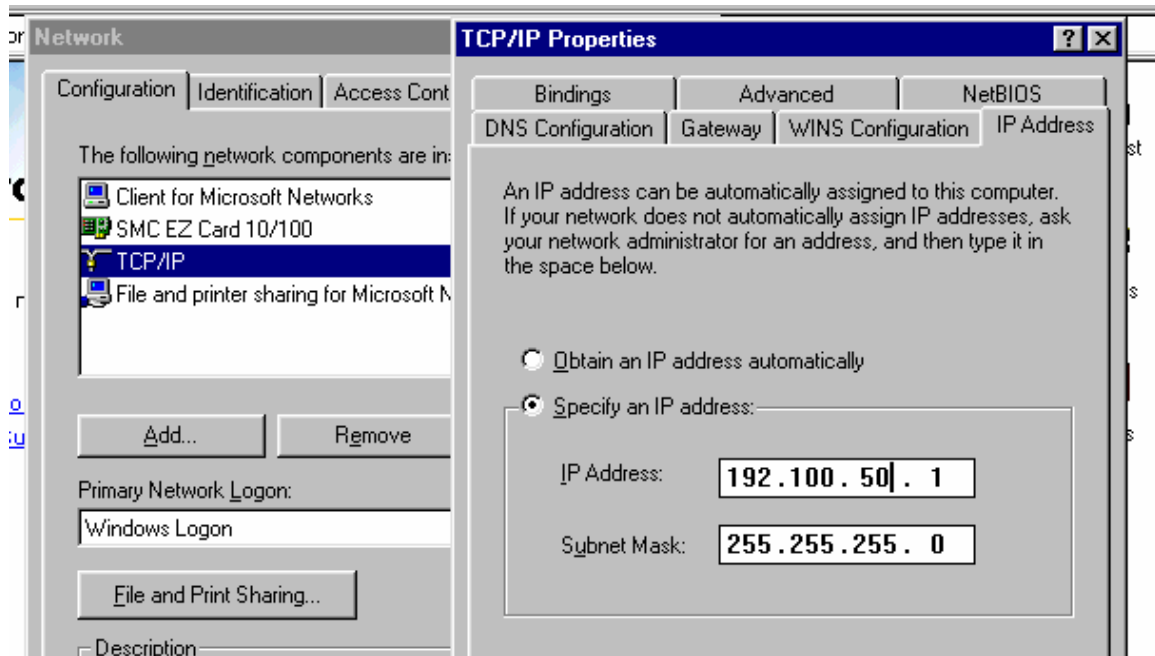
This will display the computer name and the work group it belongs to.



This video system will **NOT** work if the *network computer name* is not correct!

Network Setup:

When setting up the register system network, TCP/IP is the required protocol with



assigned IP address.

How to set an IP address:

Click start, click settings, click control panel, double click network. Select *TCP/IP* and click properties, click the tab labeled *IP Address*. Check to label *Specify an IP address*.

Example: Each register will use the subnet mask of 255.255.255.0
Use for an IP address 192.100.50.1 increment the last number up by 1 for each register.
Use 192.100.50.2 for register 2 and so on.

Monitor Assignments:

Printer Setup			
Test Printer	Printer Name	Available Printers	Device Name
Receipt Printer	Receipt	LPT1:	Receipt
Report Printer	Slip	None	None
Remote Printer 1	Monitor 1	Monitor 1	Rmt. Monitor 1
Remote Printer 2	Monitor 2	Monitor 2	Rmt. Monitor 2
Remote Printer 3	Monitor 3	Monitor 3	Rmt. Monitor 3
Remote Printer 4	Monitor 4	Monitor 4	Rmt. Monitor 4
Remote Printer 5	Monitor 5	Monitor 5	Rmt. Monitor 5
Remote Printer 6	Monitor 6	Monitor 6	Rmt. Monitor 6

Cash Drawer Setup							
Cash Drawer #1	None		27	112	0	48	0
Cash Drawer #2	None						

Once the options have been selected the monitors will be added to list of available printers. To select a monitor click on the list box labeled available printers find the name of the monitor and click, this will select the monitor port and monitor name. Once the monitors have been assigned, you are now ready to assign monitors to menu items.

Note: monitor and remote printers can be used together.

Example:

*Remote printer 1 Expo Com2: GenText
Remote printer 2 Monitor 1 Monitor 1 Rmt. Monitor 1*

This configuration will send menu items to the expo printer and send menu items to monitor 1. Use as many combinations as desired.

The next step is assigning monitors to menu items.

Assign monitors to menu items:

Menu Item Name	Giant Fish San
Category	Sandwiches
Department	Sandwiches
Regular Price	3.29
Number Available	9999
Sales Tax Table	1
Special Tax Table	0
Liquor Tax Amount	.00
Available Daily	<input checked="" type="checkbox"/>
Taxable	<input checked="" type="checkbox"/>
Expand Print	<input checked="" type="checkbox"/>
Use Timed Events	<input type="checkbox"/>
Modifiers are Required	<input checked="" type="checkbox"/>
Remote Printing is Required	<input checked="" type="checkbox"/>
Price Includes Sales Tax	<input type="checkbox"/>

Button Appearance

Giant Fish Sandwich

Menu Modifiers		
Check Box for Optional Modifier		
Modifier # 1	<input checked="" type="checkbox"/>	Sandwich Mod
Modifier # 2	<input type="checkbox"/>	None
Modifier # 3	<input type="checkbox"/>	None
Modifier # 4	<input type="checkbox"/>	None
Modifier # 5	<input type="checkbox"/>	None

Remote Printers	
Remote Printer # 1	Monitor 1
Remote Printer # 2	Monitor 2
Remote Printer # 3	Receipt Slip
Remote Printer # 4	Monitor 1
Remote Printer # 5	Monitor 2
Remote Printer # 6	Monitor 3
	Monitor 4
	Monitor 5
	Monitor 6

Select a menu item. Check the box *Remote Printing is Required*, this will activate the section labeled remote printers. Select the name of each remote that this menu item will be sent to. Make sure that no spaces are skipped. The remote printing routine searches for each printer until it sees *none or not available*. Any printer assigned after that will not be accepted.

Make sure you click *Save* when done.

Routing modifier to different remote printers:

The screenshot shows a software interface for configuring modifiers. At the top left, there are fields for 'Modifier Title' (Side Mods) and 'Selection Number' (0). To the right are buttons for 'Add to List', 'Search', and 'Remove Item'. Further right is a 'Modifier Options' section with checkboxes for 'Mandatory Selection' (unchecked), 'Allow more than one selection' (checked), 'Expand Print on Ticket' (checked), and 'Print in Color' (checked). On the far right are 'Clear', 'Save', and 'Exit' buttons. Below this is a main area with a 'Modifier Name' field (Fries), 'Modifier Cost' (.00), and 'Modify this modifier with' (None). There are also 'Tax Table' (1), 'Sales Tax', 'Spc Tax Tbl' (0), 'Special Tax', and 'Liquor Tax Amount' (0) fields. A 'Remote Printer Assignment' dialog box is open in the center, showing a list of remote printers with 'Pass' and 'Monitor 2' selected. A 'Done' button is at the bottom of this dialog. To the right of the dialog is a table with 'Modifier With' and 'Alt. Remote Printer' columns, with 'None' listed for multiple entries. There are also 'Down' and 'Move Modifier Up' buttons.

Modifiers, by default, travel with the menu items. If an alternate printer is required, click the gray button on the bottom left. A blue box Remote Printer Assignment will appear. Modifiers can be rerouted to a different printer or even skipped.

In this example, the modifier, Fries, will not travel with the menu items assigned. Fries will not be sent to the menu item's 1st remote printer and will be sent to monitor 2 instead.. In the remote printer assignments, setting the remote printer to none will set the item back to default causing the item to travel with the menu items remote printers. The advantage in using this setup is the ability to send Hot Items to 1 location and cold items to a different.

Example:

The menu item is Steak. You could choose soup as a modifier, the steak could be sent to the grill and the soup could be sent to the soup station. If a salad is a modifier, it could be sent to the salad station.